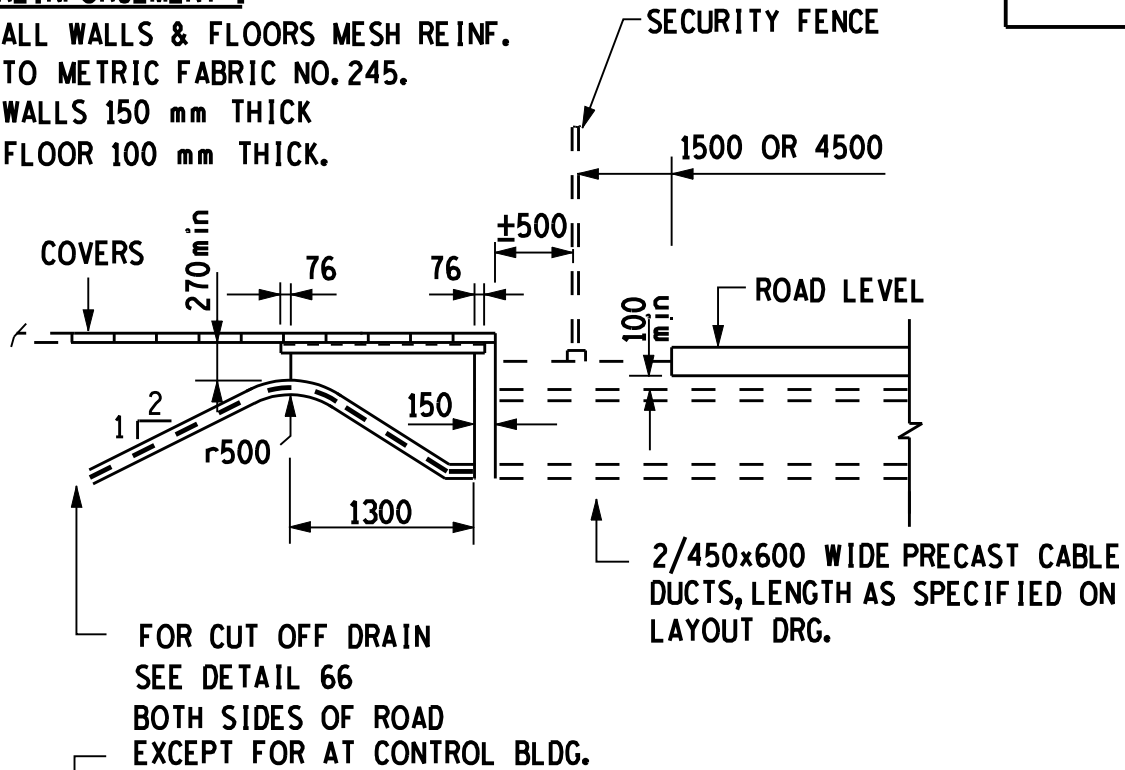


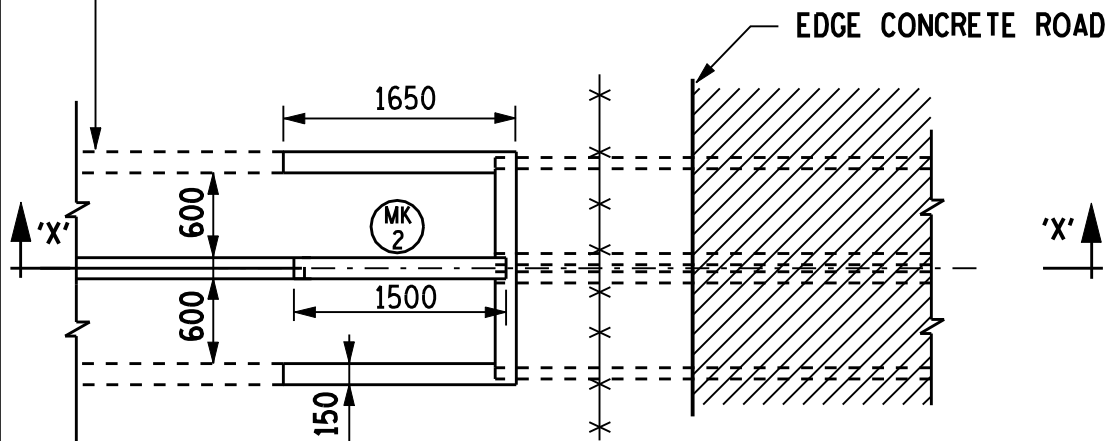
REINFORCEMENT :

ALL WALLS & FLOORS MESH REINF.
TO METRIC FABRIC NO.245.
WALLS 150 mm THICK
FLOOR 100 mm THICK.

DETAIL 34



SECTION 'X'-'X'



CABLE TRENCH

DOUBLE CABLE TRENCH CROSSING ROAD

THE C.A.D. REFERENCE NUMBER IS :
MUTS0.54/00390K33.R05

TRANSMISSION
SUBSTATION
TECHNOLOGY
DEPARTMENT



ESKOM

DRAWN
GETEKEN

Z.K.F.

23/4/80

CHKD
NAGES

R.J.C.

AUTH
MAS

REV

4

DATE
DATUM

19/1/99

H V YARD CIVIL WORK
STANDARD DETAILS

0.54/390

SHEET 34

DRG.TEK
REGISTR

A4L